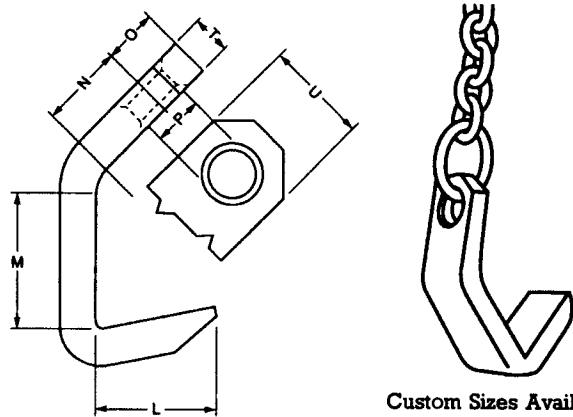


ACCOLOY® PLATE HOOK

Accoloy Plate Hooks are designed for the most popular chain sizes – 9/32", 3/8", 1/2", 5/8", 3/4", and 7/8". They are proof tested to the same values as the corresponding chain – therefore, the same working load limit applies.

Fabricated from alloy steel, Plate Hooks can be furnished on Registered Slings as well as with various chain assemblies.

Accoloy Plate Hooks are intended for use in handling plates, flats, and structurals.



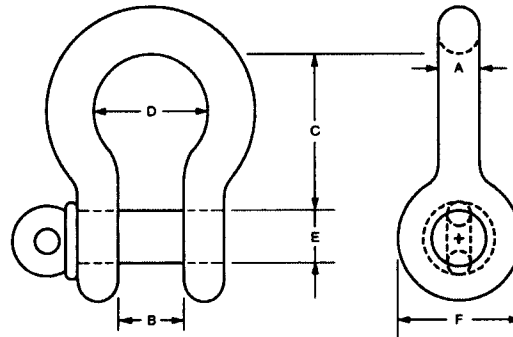
Custom Sizes Available

Specifications

Stock Number	Size of Chain		Accoloy Working Load Limits* Lbs.	Wt. Each Lbs.	Dimensions – Inches						
	In.	mm			L	M	N	O	P	T	U
5934-00400	9/32	7	3,500	2.4	2	2	1-1/2	13/16	7/8	3/4	2
5934-00600	3/8	10	7,100	4.6	2-5/8	3	1-7/8	1-1/16	1-1/8	3/4	2-1/4
5934-00800	1/2	13	12,000	10.6	3-1/2	4	2-1/2	1-3/8	1-1/2	1	3
5934-01000	5/8	16	18,100	20.7	4-3/8	5	3-1/8	1-3/4	1-7/8	1-1/4	3-3/4
5934-01200	3/4	20	28,300	36.7	5-3/16	6	3-3/4	2-1/8	2-1/2	1-1/2	4-1/2
5934-01400	7/8	22	34,200	52.6	6	7	4-1/2	2-7/16	2-5/8	1-3/4	5-1/4

ACCOLOY® SCREW PIN ANCHOR SHACKLES

Forged alloy steel shackles & alloy pins for greater strength & abrasion resistance. Heat treated and tempered.



Specifications

Stock Number	Shackle Size A Dia. Mil. In.	Accoloy Working Load Limits* Lbs.	B Inside Width In.	C Reach In.	D In.	E Dia. of Pin In.	F In.	Approx. Weight per 100 Pcs. Lbs.
5935-00060	3/8	4,000	21/32	1-7/16	15/16	7/16	1-1/8	30
5935-00080	1/2	6,600	13/16	1-7/8	1-3/16	5/8	1-3/8	74
5935-00100	5/8	10,000	1-1/16	2-3/8	1-1/2	3/4	1-7/8	144
5935-00120	3/4	14,000	1-1/4	2-13/16	1-3/4	7/8	2-1/8	216
5935-00140	7/8	19,000	1-7/16	3-5/16	2	1	2-3/8	337
5935-00160	1	25,000	1-11/16	3-3/4	2-5/16	1-1/8	2-5/8	530
5935-00200	1-1/4	36,000	2-1/32	4-11/16	2-7/8	1-3/8	3-1/4	960
5935-00240	1-1/2	60,000	2-3/8	5-3/4	3-3/8	1-5/8	3-3/4	1,730
5935-00320	2	100,000	3-1/4	7-3/4	5-1/4	2-1/4	5-1/4	4,110